



AT THE FOREFRONT

UChicago Medicine

Comprehensive Cancer Center

Hematology/Oncology

FELLOWSHIP TRAINING PROGRAM



4,000

The approximate number of new cancer patients treated by UChicago Medicine specialists each year.



350+

Number of therapeutic clinical trials in all phases conducted as a Lead Academic Participating Site of the National Clinical Trials Network.



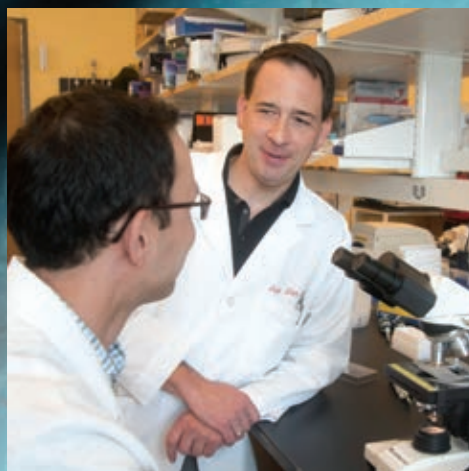
200+

The number of full and associate members in the University of Chicago Medicine Comprehensive Cancer Center.



43

The number of full faculty members in the Section of Hematology/Oncology, the largest sub-specialty section in the Department of Medicine at the University of Chicago.



Welcome to Chicago

We are pleased that you are considering the University of Chicago Medicine Comprehensive Cancer Center for a fellowship in Hematology/Oncology. For decades, the University of Chicago has served as a grooming place for some of the brightest and most innovative physicians and scientists, many of whom have gone on to achieve national and international acclaim. Continually challenging and motivating our fellows to reach new heights, our faculty stands ready to guide you in this remarkable experience, which will prepare you for a rewarding and exciting career in academic medicine. The University of Chicago Medicine's leading-edge inpatient and outpatient facilities as well as our network of community practices and global partners offer a broad and deep clinical experience, while the university's extensive research facilities foster a rigorous spirit of inquiry.

Here, we provide a glimpse into postdoctoral research training in Hematology/Oncology within the University of Chicago; a vibrant program that offers fellows an intense experience and a vast array of opportunities to learn, treat patients, conduct research, and be closely mentored by leading faculty members within a supportive and stimulating scientific environment. With roots that run deep into the foundations of biomedical research and clinical excellence, our program prepares the next generation of leaders in interdisciplinary and interprofessional high quality clinical practice.

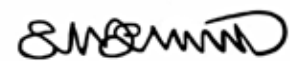
Sincerely,



Funmi I. Olopade, MD, FASCO
Walter L. Palmer
Distinguished Service Professor



Kenneth Cohen, MD
Associate Professor
of Medicine



Sonali M. Smith, MD, FASCO
Elwood V. Jensen
Professor in Medicine



The Training Program

This is a highly-selective program that culls the best candidates to cultivate tomorrow's leaders in Hematology and Oncology. The challenging and highly structured Postdoctoral Fellowship Training Program is an important component of the career enhancement and educational efforts at the University of Chicago Medicine Comprehensive Cancer Center. **Fellows have the opportunity for rigorous training leading to careers as physician-scientists, clinician investigators and/or academic clinicians.** A major emphasis is placed on learning how to research viable solutions to clinical problems in the fields of Hematology and Oncology. The program's first year is primarily clinical with the following two or more years devoted to basic, translational, or population research. The program also offers the flexibility to fulfill all requirements for the initial certification as a clinical practitioner in Hematology, Medical Oncology, or Hematology/Oncology, as recommended by the American Board of Internal Medicine, through either a two- or three-year program. Fellows who complete a two-year program are eligible for certification in either Hematology or Medical Oncology. Opportunities exist for joint training in Clinical Pharmacology, Medical Ethics, and Geriatrics.

Postdoctoral Training At One of the World's Finest Institutions

Accredited by ACGME, clinical training for Hematology/Oncology provides a broad background in both specialties and assists in the achievement of clinical excellence. The program balances inspiring and experienced faculty leadership with autonomy that impels fellows to mature into insightful physicians.

The University of Chicago

The University of Chicago is recognized as one of the world's finest universities. It is a private, non-sectarian institution that has continually maintained its commitment to scholarship, teaching, and research since its founding in 1890. With four graduate divisions (Biological Sciences, Physical Sciences, Social Sciences, and Humanities), seven professional schools (Medicine, Law, Public Policy, General Studies, Divinity, Social Service Administration, and Business), and an undergraduate college, it's produced an astounding ninety-one Nobel Laureates across its world-class faculty, students and researchers. Faculty accomplishments include more than 200 members of the American Academy of Arts and Sciences and more than 50 members of the National Academy of Sciences. Fifty-two members of the university community have received the MacArthur Genius Award with 15 receiving the National Medal of Science, and many others serving as advisors to governmental and policy-making bodies.

The Pritzker School of Medicine (PSOM)

Our school of medicine sponsors NCI funded Scholars in Oncology Associated Research (SOAR) program which aims to inculcate the next generation of cancer researchers with the desire to understand and improve quality of

cancer care through pursuit of research intensive careers in Academia, Industry, Government or private Health Systems. SOAR enables PSOM to maintain its tradition of excellence in preparing a diverse and highly skilled workforce to achieve the promise of precision oncology care and promote global health equity.

The University of Chicago Medicine Comprehensive Cancer Center

The Comprehensive Cancer Center supports more than 200 researchers and physicians from a broad range of disciplines engaged in discovering new insights to advance cancer prevention, detection, treatment, and survivorship. Established in 1973, the Comprehensive Cancer Center is one of only two NCI-designated comprehensive cancer centers in Illinois designated by the National Cancer Institute (NCI) and has earned a reputation for scientific excellence, innovation, and its commitment to addressing and improving all aspects of cancer along the cancer care continuum. In addition to research, the Comprehensive Cancer Center has a strong commitment to supporting trainee and faculty development across the career trajectory and bringing cancer research findings to the South Side Chicago Community.

“A superior academic institution where you can find an expert in just about every field. You are only limited by your imagination.”

Making your own path...

The possibilities are endless, from clinical cancer genetics, microbiome research and prevention, health policy, bioinformatics, business administration, or **even medical anthropology.**



Training Innovators for 21st Century Oncology Care

Cancer is a complex disease caused by the progressive accumulation of multiple gene mutations combined with epigenetic dysregulation of critical genes and protein pathways. We though recognize that genes don't work in isolation and rigorous examination of the social determinants of cancer outcomes are of critical importance. The overarching goal of our training program is to prepare the next generation of physicians who will tackle the biggest challenges in oncology.

Training that Meets the Challenges of Oncology

Trainees graduating from our program will be equipped with the knowledge and skills to identify the fundamental cellular, molecular, genetic, and immunologic mechanisms that are central to cancer. Such knowledge, when applied in the clinic to diagnose and treat cancer and disseminated in the community to prevent cancer, will address the morbidity and mortality associated with the disease. We are confident that the exciting scientific environment at the University of Chicago, with the partnerships created on the Southside of Chicago and across the globe, will prepare our trainees for global leadership in oncology in an increasingly interconnected world.

There is no one best training method to develop tomorrow's leaders in Hematology and Oncology. With access to institutional NIH-funded training grants, including the prestigious Paul Calabresi Scholars Program, the Hematology/Oncology Fellowship Program aims to recruit creative and

hard-working fellows and provide a stimulating and supportive environment for innovation. Mentorship is provided by assigning faculty advisors who assist first-year fellows in identifying a multi-disciplinary mentorship committee for clinical training and research skills development.

While there is no requirement to pursue additional advanced degrees, previous fellows have obtained degrees in fields as varied as anthropology, arts, bioinformatics, bioethics, business administration, human genetics, public health sciences, and public policy. Specialized training paths are established in clinical investigation, clinical pharmacology, geriatrics oncology, and global oncology, allowing for additional certificates or board certifications that can be helpful in defining a professional niche. Because the hospital is located directly on the University of Chicago campus, fellows are able to take courses and pursue advanced graduate degrees in any program of study offered by the university.

FACULTY SPOTLIGHT



Blase Polite, MD, MPP
Professor of Medicine

Dr. Polite, Associate Section Chief for Quality, Network Strategy, Inpatient Operations, is a Professor of Medicine, member of the GI Oncology program, and health disparities and policy researcher who now serves as the Executive Medical Director for Cancer Accountable Care where he oversees the negotiations and implementation of several alternative payment models for cancer care. An active practicing GI oncologist in the section of Hematology/Oncology, Dr. Polite specializes in the treatment of patients with colorectal and anal cancers. He received the Distinguished Clinician Award from the Biological Sciences Division Faculty and Distinguished Teaching Award from the Oncology Fellows. His primary research focus is in Cancer Health Disparities with a particular focus on the psychosocial and spiritual aspects of providing high quality care for underserved patients with advanced cancer.

Outstanding Resources for Clinical Care

The University of Chicago's state-of-the-art resources, coupled with a dedicated and skilled support staff, provide a vibrant setting for clinical training where fellows witness and participate in the treatment of both common and rare hematology and oncology conditions. The clinical training program emphasizes molecular pathology diagnosis, accurate staging and protocol design, as well as patient care and management. Particular emphasis is given to the emotional needs and quality-of-life of patients and family members. Interdisciplinary and interprofessional training with interdigitation of basic science, clinical epidemiology, and behavioral research is emphasized and pursued.

Duchossois Center for Advanced Medicine

Duchossois Center for Advanced Medicine (DCAM), a six-story, 525,000 square-foot building, brings together most of the Medical Center's diagnostic and outpatient treatment services.

The DCAM is designed to provide the best possible setting for the healthcare of the future, bringing the latest medical technology and scientific know-how to each patient in the most convenient, efficient, and comforting environment imaginable.

OUTPATIENT SERVICES

Outpatients are seen at the Duchossois Center for Advanced Medicine, a world-class facility on the medical campus. In addition to private examination rooms and physician consultation facilities, there is a recently remodeled and fully equipped and staffed unit for outpatient transfusion and

intravenous chemotherapy administration as well as an outpatient apheresis unit. The outpatient units are in operation daily, Monday through Friday, under the direction of Hematology/Oncology staff.

Center for Care and Discovery

INPATIENT SERVICES

Separately staffed Hematology/Oncology inpatient services are designed to manage the multiple problems presented by the hematology or oncology patient. An inpatient Hematology/Oncology consultation service is also provided. Among many of its differentiators, the University of Chicago Medicine is one of the only sites in the country with both off-protocol and clinical trials of chimeric antigen receptor T-cell therapy in pediatric and adult patients. Fellows participate in the care of these patients in clinic and on inpatient stem-cell therapy services.

FACULTY SPOTLIGHT



Rita Nanda, MD
Associate Professor of Medicine

Alum of both UChicago's Pritzker School of Medicine and our fellowship training, she is now Director of Breast Oncology, where she leads the clinical and translational breast cancer research efforts across the institution,

developing a robust infrastructure to conduct leading-edge, highly-translational, biomarker-rich clinical trials. Dr. Nanda was recipient of the 2014 NCI Cancer Clinical Investigator Team Leadership Award.

FACULTY SPOTLIGHT



Olwen Hahn, MD, PhD
Associate Professor of Medicine

Dr. Hahn, Associate Section Chief for Outpatient Clinical Operations, Professional Development and Engagement, joined our faculty in 2008. She serves as primary investigator on multiple clinical trials in breast cancer.

Dr. Hahn was the recipient of the University of Chicago's Distinguished Clinician Award. Her organizational and leadership skills have proven essential to managing operations and improving patient outcomes.



Clinical Training

Emphasis on molecular pathology diagnosis, accurate staging and protocol design, as well as patient care and management.

“ We are the primary decision makers for our patients, as opposed to most fellowship programs.

Interdisciplinary Research Opportunities

In addition to strong clinical programs, one of the most notable aspects of our training program is the interdisciplinary interaction and collaboration among faculty and fellows. Interdisciplinary research opportunities are in abundance as illustrated by the large number of publications and grants by fellows. Research training faculty in our T32 and K12 training programs are able to interact on a number of collaborative research and training efforts because of the close proximity of the investigators at the University of Chicago campus and research activities within our Comprehensive Cancer Center.

Cancer Immunology

Drs. Gajewski, Schreiber, Savage, Kline, Sweis, and colleagues in the Committee on Immunology actively mentor fellows interested in cancer immunotherapy. Our Immunology and Cancer Program's research activities are broad and span fundamental investigations in immunology, mouse models of antitumor immunity, and novel immunotherapy clinical trials. Researchers in the program pursue these studies in order to understand the interface between the host immune system and malignant tumors, and to use that knowledge to develop ways to manipulate that interaction to promote immunemediated tumor destruction in cancer patients.

Cancer Genomics/Preventive Oncology

Drs. Olopade, Godley, Huo, Polite, Catenacci, Drazer and colleagues across departments collaborate to advance translational genomics research and cancer prevention. The program is internationally renowned for its focus on training leaders in cancer genetics/genomics dating back to the early 1960s when the Cytogenetics Laboratory was established in the Section of Hematology/Oncology by Dr. Janet Rowley. In the early 1970s, Dr. Rowley and her collaborator, Dr. Harvey Golomb, described the association of the recurring chromosomal abnormalities in leukemia with distinct morphological subtypes of the disease. Many of the faculty

FACULTY SPOTLIGHT



Thomas Gajewski, MD, PhD
*AbbVie Foundation Professor of
Cancer Immunotherapy*

Dr. Gajewski was recruited and short tracked on the Physician Scientist Development Program from our PSOM and, is now an internationally recognized leader in Cancer Immunotherapy. He

oversees the Melanoma Oncology Clinic, leads the Immunology and Cancer Program at the University of Chicago Comprehensive Cancer Center, and directs the Human Immunologic Monitoring Core Facility.

FACULTY SPOTLIGHT



Lucy Godley, MD, PhD
*Hospira Foundation Professor of
Medicine and Human Genetics*

Dr. Godley trained in our fellowship program and serves as Associate Director in the Medical Scientist Training Program. As a member of the Physician Scientist Development Program in

the Department of Medicine, Dr. Godley is responsible for recruitment of physician scientists with PhD degrees to the program.



“ When I started my search for a Hematology/Oncology fellowship, I was looking for a program with faculty who were actively pushing and reshaping the fields of Hematology/Oncology, a program with a rich history of training physician scientists, whose training environment would provide me with opportunities to broaden my research “toolbox”. **The University of Chicago not only met all three of those requirements**, but also provided me with the opportunity to care for patients who represent the full tapestry of people who live in Chicago and the Midwest. ”

Michael Drazer, MD
Clinical Instructor of Medicine

have continued this tradition and have developed ongoing collaborative projects. Dr. Olopade is the Director of the Center for Clinical Cancer Genetics & Global Health, a center that facilitates the rapid transfer of advances in genome sciences to the patient's bedside. The center facilitates access to genetic testing protocols, genetic counseling, and clinical research protocols. In addition, the center has developed recruitment strategies to expand the numbers and the diversity of patients tested for inherited cancers and participating in clinical research protocols focused on behavioral modification, screening for early detection and cancer prevention clinical trials. The center has been invaluable in the training of our fellows in collaboration with faculty from other departments.

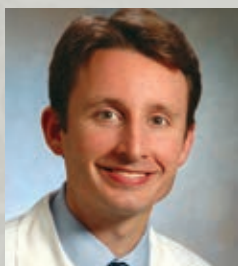
Bone Marrow and Stem Cell Transplantation

Drs. Bishop, Wickrema, Liu, Reidell, Larson, Odenike, Stock and an exceptional team of hematologists at the University of Chicago Medicine offer the latest approaches in stem cell transplant. Our patients benefit from physicians like Dr. Bishop, who is an expert in stem cell transplant, bone marrow transplant and cellular therapies, such as CAR-T cell therapy. Innovative programs are designed to meet the specific needs of both a young adult population and a 60+ demographic.

Clinical Pharmacology and Experimental Therapeutics

Drs. Ratain, Dolan, Fleming, Stadler, Kindler, O'Donnell, Szmulewitz, and colleagues interested in Phase I, II, and III clinical trials anchor an intellectually stimulating program for training as a Clinical Trialist. For example, an important goal of our Center for Personalized Therapeutics is to foster interaction among basic, translational and clinical investigators, with expertise that spans the entire range of pharmacogenomic research including pharmacology, genomics, informatics, clinical validation, clinical implementation, outcomes, and public policy. In addition our fellows are able to participate in early phase clinical trials as well as co-operative group clinical trials due to leadership of some of our faculty members. An example is the Personalized Cancer Care Consortium (PCCC), a network of 6 academic and community-based cancer clinics and hospitals in the Chicago Metro area, Central Illinois and Northeast Indiana. We also signed a partnership agreement with Abbvie Pharmaceutical Company on the NorthShore of Chicago for those interested in industry. Lastly, through the Polsky Center for Entrepreneurship, fellows can learn how to bring drugs and ideas to market and a few of our fellows and faculty over the years have taken advantage of the affiliation with Booth Graduate School of Business to start their own companies or receive an MBA.

FACULTY SPOTLIGHT



Peter O'Donnell, MD
Associate Professor of Medicine

Dr. O'Donnell, a graduate of our Pritzker School of Medicine and past trainee in our Fellowship Program, is Associate Director for the Center for Personalized Therapeutics, the Clinical Pharmacology and Pharmacogenomics Fellowship Program, and the Paul Calabresi Oncology Training Program. He now leads an initiative exploring the benefits of incorporating broad pharmacogenomic testing into routine clinical practice for all cancers.

FACULTY SPOTLIGHT



Randy Sweis, MD
Assistant Professor of Medicine

Dr. Sweis, a graduate of the Pritzker School of Medicine and past trainee in our Fellowship Program is focused on enhancing the immune response against cancer. Using his expertise in developmental therapeutics and clinical pharmacology, he translates laboratory findings to patient care, developing novel therapeutic strategies to improve the effectiveness of immunotherapy treatments.



“ The last two years of fellowship were truly transformative. I joined the lab of Dr. Godley and was immersed in translational leukemia research. This made the transition to a junior leukemia faculty position seamless, as I had the skills and tools needed to start my research career. ”

Afaf Osman, MD
Assistant Professor
Hematology and Hematologic Malignancies
University of Utah Medicine

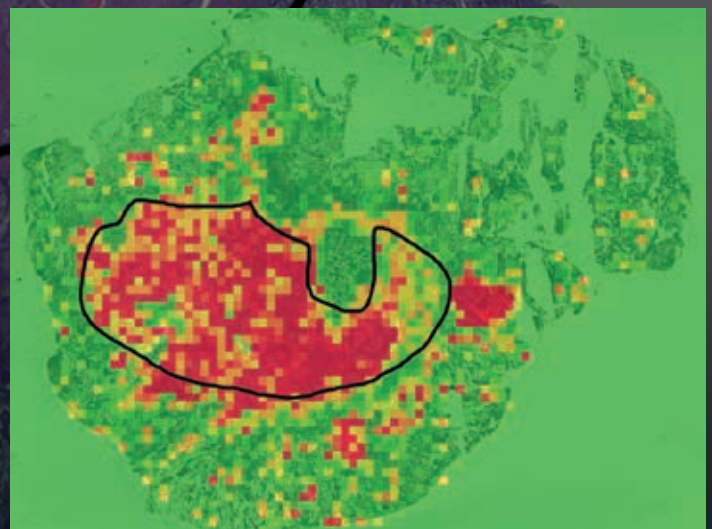
Future Leaders

For Precision Oncology Care

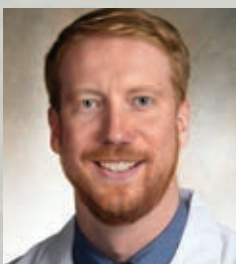
The Pearson Lab integrates clinical expertise, mathematical modeling, high dimensional statistics, and basic tumor biology methods to investigate and propose new treatments for head and neck cancer.

Medical oncologist Alexander T. Pearson, MD, PhD, cares for adults with head and neck cancers, especially squamous cell carcinoma, a common form of cancer that develops in the squamous cells that make up the middle and outer layer lining the mouth and throat. He also specializes in salivary gland cancers.

His research combines laboratory experiments and mathematical models to more fully understand how head and neck cancers form and how to better design treatments for these cancers. He is currently the principal investigator on an NIH-funded study on the development of combination therapies for head and neck cancer.



FACULTY SPOTLIGHT



Alexander Pearson, MD, PhD
Assistant Professor of Medicine

Dr. Pearson performs basic and translational science research to understand how head and neck cancers develop treatment resistance, and then propose new ways to overcome this resistance. His research integrates mathematical modeling and statistical genomics with laboratory data in order to propose more effective treatment combinations.

Dr. Pearson performs basic and translational science research to understand how head and neck cancers develop treatment resistance, and then propose new ways to overcome this resistance. His research integrates mathematical modeling and statistical genomics with laboratory data in order to propose more effective treatment combinations.

FACULTY SPOTLIGHT



Daniel Catenacci, MD
Associate Professor of Medicine

Dr. Catenacci completed his training at the University of Chicago and is an active basic and clinical researcher, focusing on the treatment of gastroesophageal (esophagus, gastroesophageal junction, and stomach) cancers.

His bench-to-bedside translational research has led to proven personalized treatments, immunotherapy, and precision medicine for gastroesophageal and other GI cancers.

A Stimulating Environment for Research

The activities of the Comprehensive Cancer Center and Hematology/Oncology Faculty encompass a broad range of collaborative research activities in both basic and clinical domains as well as a wide range of educational programs within the university and with community hospitals in the Chicagoland area. The section has been an active participant as a full member of the Alliance Clinical Trials Cooperative Group with the leadership of this large national cooperative clinical trial group partially headquartered at The University of Chicago under Executive Director, Dr. Olwen Hahn.

To create new interdisciplinary research programs, the Division of Biological Sciences has expanded the infrastructure for team science and translational research. Collaborative research is facilitated by our research facilities, including the Gordon Center for Integrative Science (GCIS) which houses the Ben May Department for Cancer Research and Department of Chemistry colleagues, the Knapp Center for Biomedical Discovery (KCBD), which houses Hematology/Oncology physician scientists and the William Eckhardt Research Center, the home of the Institute for Molecular Engineering with a robust cancer immunotherapy group. The University has also deployed significant resources and infrastructure to genomics, bioinformatics, and computational biology with the establishment of NCI's Genomic Data Commons on our campus.

Research Facilities

The Hematology/Oncology Section and the Comprehensive Cancer Center have excellent facilities for biostatistics and data management. Oncology care is strongly supported by the Department of Radiation and Cellular Oncology, as well as by Departments of Surgery, Pathology, and Diagnostic Radiology. The clinical research programs are focused on highly specific areas although patients with all types of hematology and oncology problems are seen through the consultation service. The individual programs function within the section and form the nucleus of our clinical effort. All cancer programs have active radiation oncology, surgical oncology, and pathology collaborations. A combined modality approach is utilized where indicated.





“ My fellowship at University of Chicago opened so many doors for me. I was able to work with experienced faculty to gain experience in clinical trial design and clinical care, which allowed me to hit the ground running as a faculty member. **Faculty members here show a true dedication to mentorship in a way that is unique to University of Chicago.** I strongly believe my three years here laid the foundation for a successful academic career. ”

Christine Bestvina, MD
Assistant Professor of Medicine

Global Oncology – Compassionate Care for *Every Patient Everywhere*

With strengths in emerging fields of precision oncology, immuno-oncology and data science, these advantages, coupled with our location in the ethnically diverse Southside of Chicago, we provide a distinct pathway for interdisciplinary and interprofessional training of the next generation of highly skilled global scholars in oncology-associated research across the cancer care continuum. Our international partnerships in Bangladesh, China, Europe, India, Latin America and West Africa strengthen our sustained focus on eliminating global disparities in cancer outcomes through innovative research. This makes the University of Chicago an ideal institution to prepare a clinical oncology workforce in an inter-connected world.

Supportive Oncology

Our nurses and physicians in Hematology/Oncology are highly experienced in treating advanced cancer patients and survivors with complex issues, anticipating their needs and managing their side effects. This multidisciplinary program under the direction of physician champion Christopher Daugherty, MD, incorporates a collaborative team of experts from several disciplines: Oncology, Nutrition, Psychosocial Oncology, Palliative Care, Physical/Occupational Therapy and Social Work. This program provides a rich environment in a central location in the medical center where experts can easily collaborate and address oncology patients and caregivers' needs.

Global Oncology

We have created exciting, innovative opportunities for you to join us in working to ameliorate disparities both locally and globally. Touting active clinical, basic and population

science programs and thriving translational research programs, our goal is to reduce global disparities in cancer outcomes by developing the platforms to apply novel approaches to the prevention, diagnosis and treatment of cancers exhibiting disparities in incidence or outcomes among US Minority populations. We leverage institutional strengths, which provide opportunities for interdisciplinary work among top scientists and clinicians across communities and international boundaries using skills from bioinformatics, genomics experimental therapeutics, human genetics, immunology, and statistical genetics to mention a few disciplines. Our location in the ethnically diverse south side of Chicago and our exciting partnerships with local programs in the Institute for Translational Medicine, make this a truly unique global oncology program.

FACULTY SPOTLIGHT



Abiola Ibraheem, MD
Instructor of Medicine

Dr. Ibraheem is working to reduce global health disparities by increasing access to innovative therapies for patients of African Ancestry. As a Global Oncologist, her research uses Implementation and Dissemination Science to enhance patient oriented research in Nigeria by improving the quality of informed consent an empowering patients to enroll and participate in clinical trials. She received medical training in Nigeria prior to proceeding to Morehouse School of Medicine in Atlanta for Residency training in Internal Medicine, where she developed a passion to help Black patients facing poor cancer outcomes. She is leveraging her clinical training in hematology/oncology and advanced training in clinical research to actively involve patients of African Ancestry in the US and Nigeria in biomarker-informed clinical trials. Her work promises to ensure ethical conduct of clinical trials that promote health equity and improve clinical practice in diverse populations.

Chicago

An Exciting Place to Live and Work

The Campus

Located only 8 miles from downtown Chicago by car, train, bus or Divvy bike, the University of Chicago campus fills about 200 acres mere blocks from scenic Lake Michigan. The heart of the UChicago campus is less than a mile from 57th St Beach, one of the many swimming spots that the South Side has to offer. The campus architecture reflects the University's roots in the past and its sights on the future, with a unique composite of Gothic and Contemporary Architecture that offers ample locations for students and faculty to study, work, relax and play. Much of the faculty, staff and students live within walking distance to the campus, and are integrated into the life of the community.

The Hyde Park Neighborhood

The University of Chicago strongly influences the flavor and feel of Chicago's Hyde Park neighborhood. With its unique character, Hyde Park maintains a strong sense of community and small town feel within its larger urban surroundings. Hyde Park is a cosmopolitan, ethnically integrated neighborhood, and is often cited as one of Chicago's most desirable neighborhoods. The area boasts a variety of restaurants, local shopping, excellent schools, and varied cultural opportunities. Hyde Park offers varied housing options including University residence halls, apartments, condominiums, and houses. Each year, Hyde Park offers various events, such as a Brew Fest, jazz concerts, art fairs, and farmers markets.

The City of Chicago

One of the nation's greatest metropolitan centers, Chicago is a patchwork of 77 ethnically and culturally diverse neighborhoods, each one offering its own unique environment,

restaurants, shopping, festivals, and cultural opportunities. Downtown Chicago is renowned for its cultural activities, boutiques, shopping and restaurants. The Chicago lakefront has been maintained as parkland and it is enjoyed for its many uses, including walking, jogging, cycling, swimming, sailing, picnics, etc. Along the lakefront are beautiful beaches where one can enjoy laying in the sand, playing beach sports, and watching live music. Large musical festivals, such as Lollapalooza, are regularly held at Grant Park in downtown Chicago and at Ravinia in Highland Park. The Taste of Chicago, held in conjunction with the city's magnificent Independence Day fireworks, attracts more than a million visitors each year.

Chicago has a great architectural heritage, with examples of classic works by Louis Sullivan, Frank Lloyd Wright, and Ludwig Mies van der Rohe. Chicago also has many examples of modern architecture and is home to one of the tallest buildings in the world, the Willis Tower (once called the Sears Tower). Chicago's many museums include the Art Institute, Museum of Science and Industry (located in Hyde Park), Shedd Aquarium, Museum of Contemporary Art, Field Museum of Natural History, and the Adler Planetarium. Chicago has many theater groups as well as the world class Chicago Symphony Orchestra and the Lyric Opera. Residents and visitors of the city also enjoy renowned comedy clubs, like Second City, jazz clubs, and nightclubs. Chicago is home to numerous professional sports teams, such as the Cubs, Blackhawks, and the Bulls. The famous Michigan Mile continues over the Chicago River, when one can enjoy kayaking, boating, and great restaurants on the beautiful Chicago Riverwalk.





AT THE FOREFRONT

UChicago Medicine

Comprehensive Cancer Center



Summer Research Fellows

VISIT US ONLINE at

medicine.uchicago.edu/sections/hematology-oncology/

CONTACT US at

773-702-4400

Knapp Center Building of Biomedical Discovery
900 E. 57th Avenue
MC 2115
Chicago, IL, 60615